

# ART FOR COLLECTORS

Spring 2007



**THE MILL POND PRESS™**  
C O M P A N I E S

Introducing the Fiery Creations of Jason Mernick (see page 8)

## Spring – A Season of New Beginnings, a Season of Change



Jason and son Drake

### Meet Torch Painter Jason Mernick

Inspired by nature, Jason Mernick has pioneered an exciting new art form. Brandishing fire the way artists traditionally use paint, Mernick creates dazzling contemporary metal wall hangings that are born of flames.

Mernick's exciting and unique works are designed for display both indoors and outdoors. His one-of-a-kind "pop" originals actually allow you to collaborate in his creative process, by bending the designs in countless ways. His custom-designed projects can be of monumental proportions. Framed or unframed, Mernick's work is bold and innovative, integrating the basic elements of fire and metal to create organic shapes with flowing lines and gleaming patinas.

For centuries, heat has been used to extract metal from natural elements. Mernick uses heat to pull natural elements from metal. With a torch, he can transform cold, rigid sheets of stainless steel, copper and aluminum into warm, fluid forms — suns and ferns, trees and flowing geometric designs.

Mill Pond Press is proud to be the distributor of Jason Mernick's original works of art. See pages 8 and 9, and visit [www.jasonmernick.com](http://www.jasonmernick.com) to learn more.

---

### Introducing Portrait Artist Vidan

Vidan is an extraordinarily talented artist whose luminous paintings reveal a spectrum of hues.

Born in Perugia, in the Umbria region between Rome and Florence, Vidan pursued his passion for art, attending some of Italy's finest art schools. He has created artwork for a number of book publishers before devoting himself exclusively to the creation of his fine art.

Today, Vidan paints in a gallery alongside his uncle, the

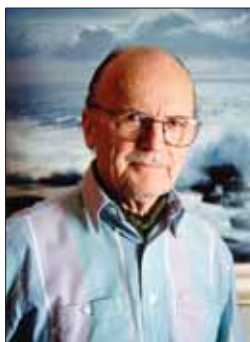
renowned artist Pino. Vidan's original portraits and landscapes are found in many prestigious galleries, earning him a reputation as one of the world's premier expressive artists.

See pages 4 and 5, and visit [www.vidanart.com](http://www.vidanart.com) to learn more.



---

### Remembering Beloved Artist Peter Ellenshaw



A fine artist considered one of the pioneers of cinematic special effects, Peter Ellenshaw was truly one of the painting masters of our age. He died February 12 in California at 93, survived by son Harrison Ellenshaw and daughter Lynda Ellenshaw Thompson and two grandchildren.

Mill Pond Press began to publish the breathtaking landscapes of Peter Ellenshaw in 1988, first as offset paper editions and later as giclée canvases, as well as the highly acclaimed book of his art, *The Garden Within - The Art of Peter Ellenshaw*, winner of the 1997 Benjamin Franklin Award.

Ellenshaw's paintings came alive in a torrent of brushstrokes. He had numerous exhibitions at prestigious art museums during his fine art career, including many one-man exhibits at New York's Hammer Galleries as well as a retrospective show at the Museum of Modern Art.

A member of Great Britain's Royal Air Force during WWII, Ellenshaw moved to California in the 1950s with Bobbie, his late wife. He worked as a matte painter in the film industry for more than 40 years, creating lavish backgrounds for more than 45 cinematic classics, not to mention his work on a number of programs from television's Golden Age. He won an Oscar for the Disney classic, *Mary Poppins*.

Film critic Leonard Maltin once said that Ellenshaw managed to "capture a vivid reality while idealizing it at the same time...It is no mere reproduction of a scene; it is a kind of heightened reality, capturing a serenity and loveliness we might strive to find in our travels...and never succeed."

Ellenshaw was a gentle man, kind, witty and enormously talented, beloved by all who knew him. Wielding his paintbrush like a wand, Peter Ellenshaw made magic, leaving us an enormous legacy that will dazzle generations yet to come.

Prepare to be Blown Away by Robert Bateman's *Windtalkers*



WINDTALKERS © Robert Bateman

Giclée Canvas \$950 50 s/n plus 10 Artist's Proofs\* 36" x 36" (WIND0016) **Publisher Sold Out**

Giclée Canvas \$795 180 s/n plus 40 Artist's Proofs\* [APs - **Publisher Sold Out**] 30" x 30" (WIND0014)

Offset Paper \$165 950 s/n plus 80 Artist's Proofs\* [APs - **Publisher Sold Out**] 22" x 22" (WIND0012)

## Sensual Portraits Bathed in Light



SUNBATHING © Vidan

Offset Paper \$165 450 s/n plus 36 Artist's Proofs\* 30" x 20" (SUNB0002)

Presenting the Luminous Limited Editions of Vidan



DAWN'S REFLECTION © Vidan  
Offset Paper \$165 450 s/n plus 36 Artist's Proofs\* 30" x 16" (DAWN0008)

# The Genius of Carl Brenders –

## Introducing the Newest Renaissance Editions by Carl Brenders



TAKE FIVE – CANADA LYNX © Carl Brenders

Giclée Canvas \$795 195 s/n plus 30 Artist's Proofs\* 17" x 35" (TAKE0003) **Publisher Sold Out**

(A 1,500 s/n offset paper edition has previously been published. Publisher Sold Out)



SUMMER ROSES – WINTER WREN © Carl Brenders

Giclée Canvas \$795 195 s/n plus 30 Artist's Proofs\*

**[APs – Publisher Sold Out]** 31" x 20" (SUMM0035)

(A 1,500 s/n offset paper edition has previously been published. Publisher Sold Out)



AN AUTUMN GENTLEMAN © Carl Brenders

Giclée Canvas \$795 195 s/n plus 30 Artist's Proofs\*

**[APs – Publisher Sold Out]** 30" x 22" (AUTU0049)

(A 950 s/n offset paper edition has previously been published. Publisher Sold Out.  
A special 750 s/n offset paper edition was also published and is not available.)

Take Time Out to Meet This Cuddly Little Fellow



TIME-OUT – GRIZZLY CUB © Carl Brenders  
Offset Paper \$85 1,500 s/n plus 100 Artist's Proofs\* 9-1/4" x 12-1/8" (TIME0013)

*Among baby animals, bear cubs are surely the funniest. They seem to be excited about every little object they find on the ground. They can jump and roll like crazy, just because of a little stick or a leaf they found. This can last several minutes. Then they can settle down as if they are ready to sleep, surprisingly jumping up again, looking for another exciting object, sometimes sharing it with a brother or a sister.*

*It is great to observe young animals, which always remind me of playing children. Painting them can be risky, triggering the critique, this is too cute. So, the art is to know how not to make them too cute, and the problem then is, they are so cute!*

*Cuteness is built into nature to activate the instinct of the mother to care for the babies. Their baby proportions make one aware that this little being cannot survive on its own. It needs care. A bear mother cannot think, but has that millions of years-old instinct to protect and defend her babies. The species has to go on; one of the wonders of life on this, oh so wonderful planet. Millions of years made this happen.*

—Carl Brenders

# Introducing Original Metal Art © Jason Mernick

Versatile... functional...fabulous!



**FERNS (Stainless Steel Pop)**  
\$260 20" x 20" (FERN0023)



**TREE OF LIFE (Stainless Steel)**  
\$1,095 45" x 38" (TREE0512)

**Beautiful, innovative  
works of art**

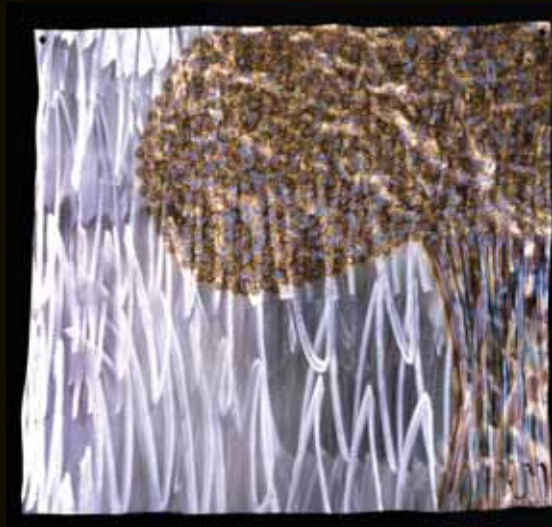
*“My art is like improvisational jazz,  
in that you can’t really predict the next note!”*



(As shown on the front cover)  
**FERNS WITH SUN (Stainless Steel)**  
\$799 46" x 30" (FERN0002)



**SUN (Copper)**  
\$685 46" x 23" (SUNC0505)



**RAINFOREST (Stainless Steel)**  
\$1,095 38" x 45" (RAIN0519)



# Think Outside the Frame

All art is handmade and unique.  
Shown is a representation; actual  
pieces may vary slightly.

Dazzling contemporary art,  
born of flames

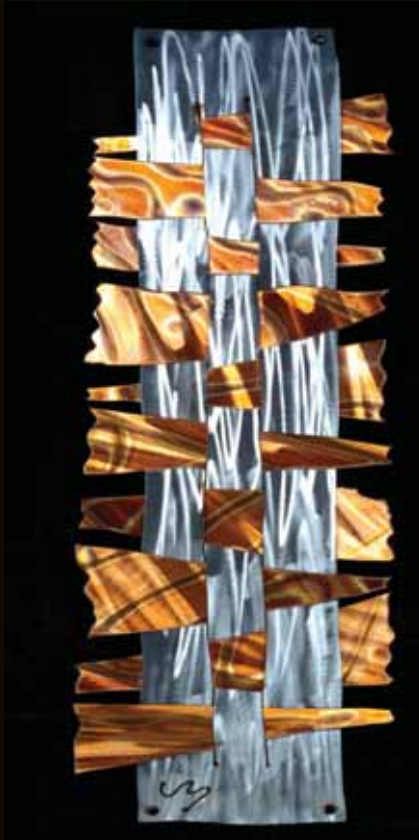


**BLOSSOM TREE (Stainless Steel)**  
\$1,095 38" x 45" (BLOS0511)

Glowing like embers,  
individual as snowflakes



**WEAVE III (Stainless Steel/Copper)**  
\$460 42" x 15" (WEAV0516)



**WEAVE (Stainless Steel/Copper)**  
\$480 47" x 14" (WEAV0507)

How hot  
is *this?*



**POP SQUARE**  
\$260 20" x 20"

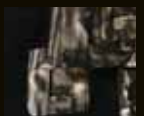
- Red - (POPR0004)
- Lime - (POPL0004)
- Aqua - (POPA0004)
- Stainless Steel - (POPS0004)



Lime



Aqua



Stainless Steel

Durable...distinctive...unique

*The idea for this painting came from a picture in an impressive exhibition of the works of Clyfford Still at the Metropolitan Museum of Art. I was awestruck. Still was a master Abstract Expressionist painter who did giant canvases of slashing organic masses of color. The painting, titled PH1081, consists of a dark, menacing shape with a slender vertical stroke crossing it. The confronting presence of this abstract form made me think of a herd of buffalo or a pack of wolves, and the spindly strokes suggested a little sapling as an inadequate screen between the animals and the viewer.*

*However, I do not mean this to be a frightening picture. The wolves, which normally avoid eye contact, are staring straight at you. Although they sense your presence, they can't quite make you out. They are alert and interested, but not about to attack. They are equal to the viewer; they are on the same level. The feeling of slight tension and respect between you and them is mutual. You are in their domain. Now that they know about you, they will melt into the gloom.*

—Robert Bateman



CLEAR NIGHT – WOLVES © Robert Bateman  
Giclée Canvas \$2,150 99 s/n plus 33 Artist's Proofs\*  
36" x 48" (CLEA0003) **Publisher Sold Out**  
Giclée Canvas \$1,595 550 s/n plus 99 Artist's Proofs\*  
30" x 40" (CLEA0001) **Publisher Sold Out**  
(A 950 s/n offset paper edition has previously been published. Publisher Sold Out)



© Robert Bateman 1991

## Exciting New Renaissance Editions by Robert Bateman



HIGH KINGDOM – SNOW LEOPARD © Robert Bateman

Giclée Canvas \$1,695 70 s/n [**Publisher Low Inventory**] plus 25 Artist's Proofs\* [**APs – Publisher Sold Out**]  
34" x 48" (HIGH0043)

Giclée Canvas \$1,295 225 s/n plus 40 Artist's Proofs\* [**APs – Publisher Sold Out**]  
28" x 40" (HIGH0041) (A 10,772 s/n offset paper edition has previously been published. Publisher Sold Out)



GHOST OF THE NORTH – GREAT GRAY OWL © Robert Bateman

Giclée Canvas \$1,695 50 s/n plus 20 Artist's Proofs\* 36" x 48" (GHOS0004) **Publisher Sold Out**

Giclée Canvas \$1,295 180 s/n plus 40 Artist's Proofs\* [**APs – Publisher Low Inventory**]  
30" x 40" (GHOS0002) (A 950 s/n offset paper edition has previously been published. Publisher Sold Out)

See the Natural World Through the Eyes of the Artist



FIRST ALERT © Robert Bateman

Giclée Canvas \$550 180 s/n plus 40 Artist's Proofs\* 18" x 20" (FIRS0041)

Offset Paper \$85 1,500 s/n plus 100 Artist's Proofs\*

**[APs - Publisher Low Inventory]** 9" x 10" (FIRS0039)



SALMON WATCH – SPIRIT BEAR © Robert Bateman

Giclée Canvas \$795 180 s/n plus 36 Artist's Proofs\* **[APs - Publisher Sold Out]** 24" x 36" (SALM0004)

(An offset paper conservation edition has also been published.)

## Julia Rogers' *Bush Fire* – So Real You Can Feel the Heat



BUSH FIRE © Julia Rogers

Giclée Canvas \$695 180 s/n plus 18 Artist's Proofs\* 30" x 36" (BUSH0004)

*On our last trip to Africa, we traveled the long sandy road through the Mababe Depression. It is almost impossible to imagine that this desolate, harsh landscape was once submerged beneath an enormous inland sea. There was a bush fire the entire trip from Moremi to Savuti. This natural and sometimes manmade event is very dramatic to see. But it is essential to certain vegetation, and many animals require it as a food source, as it stimulates new growth. We made a pit stop, and this bull elephant circled around our vehicle. He was letting us know that this was his turf.*

—Julia Rogers

## Matthew Hillier Presents an Elegant Vision in White



WHITE LIGHT © Matthew Hillier  
Giclée Canvas \$695 180 s/n plus 18 Artist's Proofs\* 21" x 43" (WHIT0030)

*A favorite subject of mine, peacocks are such elegant birds and great fun to paint. This, however, is the first time that I have tackled a white one.*

*Known as the bird with one hundred eyes, the peacock has been prized by many cultures throughout the ages. The peacock is the male of the species known as peafowl, which are related to pheasants. Peafowl come in a wide variety of colors due to selective breeding and can live more than forty years, given ideal conditions. The India blue and the green peafowl are two of the most common forms found in the wild. This white variation of the peacock is not albino as some might think, but a recessive mutation having a dark, rather than red, iris.*

*In courtship, the peacock fans his long ornamental feather train in a dazzling display to impress the female, known as the peahen. Both genders share the feather crest, resembling a crown. Their offspring under one year of age are known as peachicks.*

*White subjects such as this one are particularly exciting because they give you an excuse to paint all the lovely lilacs and golds in the shadows. One usually associates peacocks with a riot of color. However, white contains all of the colors of the spectrum. This painting is loose rather than detailed, and as such, is really a study of warms and cools and color; hence the reason for the title, White Light.*

—Matthew Hillier

## Simply Irresistible, as Simple as Black and White



*One could say that I make a composition with animals, the goal always being to make a nice piece of artwork, a scene that is nice to look at, telling a story, showing those simple things that happen in nature. But getting all those nice textures makes you go to the essence of every little detail, because everything in nature is important. It is portraying the cycle of life, new things coming up, other things dying out. Rocks left somewhere by a glacier, millions of years ago. Mosses and lichens around and on it, a fascinating story to tell of millions of years. No subject is greater to depict than nature.*

Carl Brenders

RACCOON STUDY © Carl Brenders  
Offset Paper \$85 1,250 s/n plus 76 Artist's Proofs\*  
**[APs - Publisher Sold Out]**  
11-3/4" x 8-7/8" (RACC0001)

© 2007 The Mill Pond Press Companies (an employee-owned company), Venice, Florida 34285 941-497-6020 or 800-535-0331 Fax: 941-497-6026 [www.millpond.com](http://www.millpond.com)

Distributed in Canada by Nature's Scene, Georgetown, Ontario L7G 4S1 [www.naturescene.com](http://www.naturescene.com) Phone: 800-387-6645

Distributed in the United Kingdom by The John Southern Gallery, Dobwalls, Nr. Liskeard, Cornwall PL 146HB, Phone (01579)320325

Mill Pond reserves the right to reproduce any image in this publication, in any format, in the future • All rights reserved • Use, distribution, reproduction or modification of this publication or the images contained herein or combination of any portion of either with anything else for any purpose or to produce any product is a violation of the copyright herein and will be prosecuted to the full legal extent • Stated sizes are image sizes; print dimensions are larger • Suggested retail prices, edition sizes, and framing are subject to change without notice • Mill Pond's ability to fulfill all requests for limited editions is restricted • † Signifies that an open edition has also been published

\*When available, Artist's Proofs (APs) are offered at a 20% premium over the s/n price

AFC Spring/07  
United States  
Printed in U.S.A.

Please share this brochure with a friend when you are finished with it.